

Online Monitoring Webserver

User Manual

EN - V 1.0



Alpha·ESS
smarten your energy

Copyright Statement

This user manual is under the copyright of Alpha ESS Co., Ltd., all rights reserved. Alpha ESS Co., Ltd., strives to innovate and provide systematic solutions for our customers. This installation manual uses accurate and reliable information as a starting point, however, with regards to the product design and technical specification updates, our company reserves the right to make changes at any time without prior notice. This installation manual is only for reference.

We advise that you strictly observe all operating instructions and warnings and keep this installation manual. Do not operate this system without completely reading all safety and operating instructions.

Content

1. Log-in	01
1.1 Web Page	01
2. Network Monitoring Page	02
2.1 Power Diagram	02
2.2 Statistical Diagram	03
2.3 Profit Diagram	04
3. Business Data Maintenance	04
4. Basic Setting	05

1. Log-in

1.1 Web Page

Open the website www.alpha-ess.com.

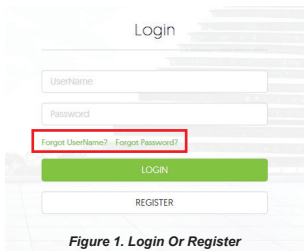


Figure 1. Login Or Register

Fill in "Username" & "Password" and click "Login", if you have already registered. If not, please Click "REGISTER".

Forgot Password

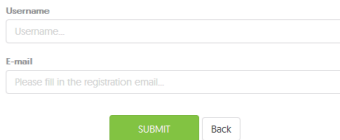


Figure 2. Recovery of Password/name

If you forgot your user name or password, You will now receive an E-Mail in your mailbox to reset the password or Username.

Register



Figure 3. Register

In this form, all blanks marked with an asterisk must be filled out.

2. Network Monitoring Page

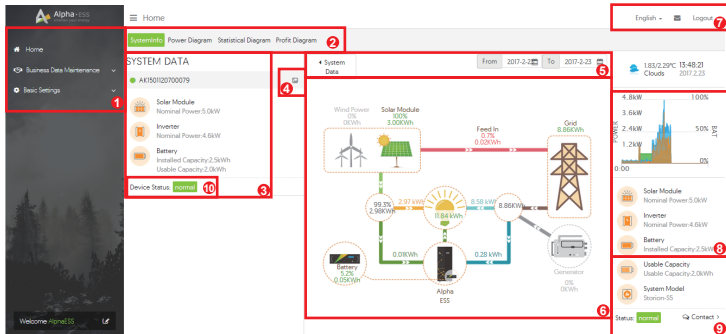
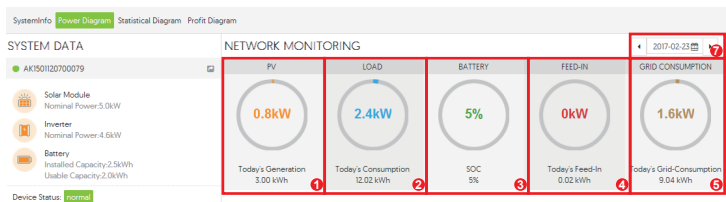
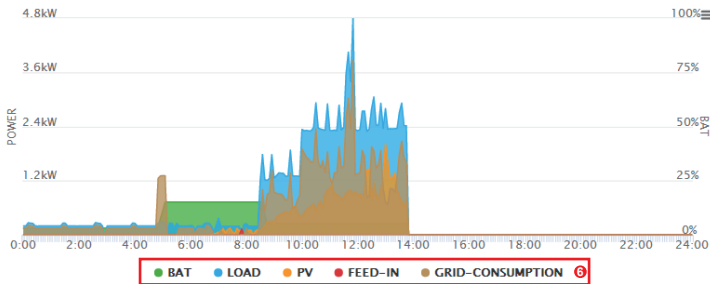


Figure 4. Network Monitoring - Overview

Number	Function
1	Home, data Maintenance and Basic Setting
2	Systeminfo, Power Diagram, Statistical Diagram, Profit Diagram select
3	Single system data, PV capacity, Inverter capacity, Battery capacity
4	Share your system to others.
5	History data select.
6	System Real-time data. (PV, Load, Battery, Feed-in, Grid consumption and Self-consumption.
7	Language and logout.
8	System Real-time data.(chart form).
9	All System data.
10	System Status. (Normal, warning, or offline)

2.1 Power Diagram





The Power Diagram includes the PV generation, load consumption, battery charge state, feed-in and Grid consumption.

Number	Function
1	PV current power & current total generation (today)
2	Load current power & current total consumption (today)
3	Battery current SOC
4	System current feed-in power & current total feed-in energy.
5	Grid-consumption current power & current total energy.
6	You can hide some curves by clicking the button.
7	Check today's or history data of the PV generation, load consumption, battery charge state, feed-in and Grid consumption.

2.2 Statistical Diagram

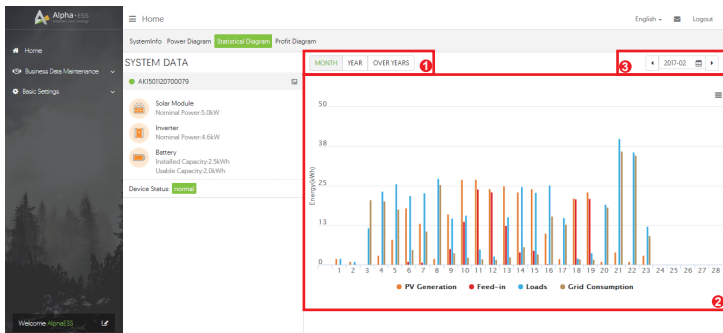


Figure6. Network Monitoring –Statistical Diagram

It shows the statistical energy value of PV, Load, Feed-in and Grid consumption in a period (month, year, years).

Number	Function
1	Select which month, year or years.
2	Total value of PV consumption, Grid feed-in, Loads, Grid consumption in a period of history.
3	Select which month.

2.3 Profit Diagram

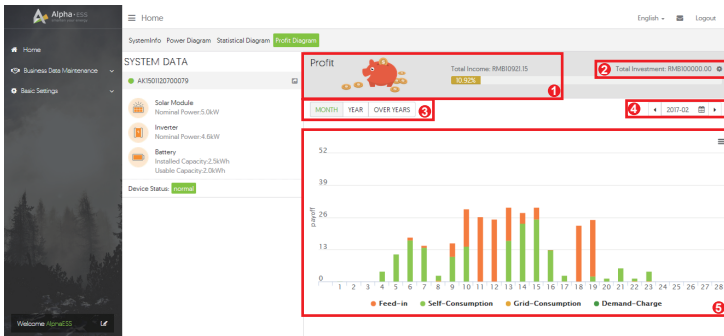


Figure 7. Network Monitoring – Profit Diagram

It shows the profit value of Feed-in, Self-consumption, Grid charge, and demand charge in a period (month, year, years).

Number	Function
1	Total income and income rate in the total investment.
2	Total investment. (Input the investment value)
3	Select which month, year or years.
4	Select which month.
5	Profit value detail

3. Business Data Maintenance

Alpha-ESS
powered your energy

Information Feedback

Business Data Maintenance / Information Feedback

English Logout

Home

Business Data Maintenance

Information Feedback List

Information Feedback

Basic Settings

Welcome AlphaESS

Thank you very much for your help and support!

*Problem types
-

*Problem level
-

*S/N
Required

*Occurrence Time

Description

Upload files
选择文件 来上传任何文件

*E-mail
Required

Phone

SAVE

Figure 8. Network Monitoring –Business Data Maintenance

You can use it for sending any problems, questions, advices about products or company to us.

4. Basic Setting

Alpha-ESS
powered your energy

Change Password

English Logout

Basic Setting / Change Password

Home

Business Data Maintenance

Basic Settings

Old password

New password

Confirm new password

SAVE

Figure 9. Network Monitoring –Basic Setting

Before you have access to the online monitoring data, you must obtain an account from your installer. More detailed information can be obtained in Online Monitoring Webserver User Manual.

You can use it to set electricity prices, user information, change password and receive notifications.

Thank you for reading the AlphaESS User Manual Online Monitoring. If you have any problems, please feel free to send an e-mail to info@alpha-ess.com.



Official Website



WeChat



Alpha·ESS / Alpha ESS Co., Ltd.

Alpha ESS Co., Ltd.

☎ +86 (0)513 806 068 91
✉ info@alpha-ess.com
🌐 www.alpha-ess.com
📍 JiuHua Road 888, Nantong High-Tech
Industrial Development Zone,
Nantong City, 226300

Alpha ESS Europe GmbH

☎ +49 (0)6103 / 459 160-1
✉ europe@alpha-ess.de
🌐 www.alpha-ess.de
📍 Paul-Ehrlich-Straße 1a, 3225
Langen, Hessen

Alpha ESS Australia Pty. Ltd.

☎ 1300 968 933 (Australia Only)
✉ australia@alpha-ess.com
🌐 www.alpha-ess.com.au
📍 Suite 2, Level 1, 530 Botany Road,
Alexandria, NSW, 2015